

Specification Status: RELEASED

Maximum Electrical Rating

Voltage: 16V_{DC}
Current: 100A

Notes:

1. All terminations are tin plated.
2. Drawing not to scale

Marking:



PART IDENTIFICATION

MANUFACTURER'S MARK

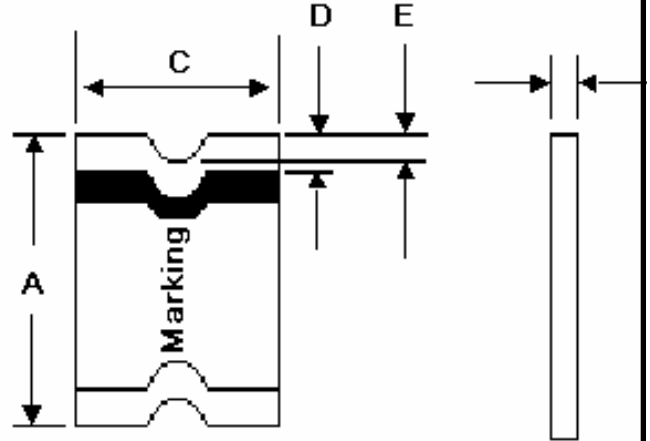


TABLE I. DIMENSIONS:

	A		B		C		D		E
	MIN	MAX	MIN	MAX	MIN	MAX	MIN	MAX	MIN
mm:	11.15	11.51	0.33	0.53	4.83	5.33	0.51	1.02	0.381
in*:	(0.439)	(0.453)	(0.013)	(0.021)	(0.190)	(0.210)	(0.020)	(0.040)	(0.015)

TABLE II. PERFORMANCE RATINGS:

CURRENT RATINGS **						TIME TO TRIP **	RESISTANCE VALUES		TRIPPED-STATE POWER DISSIPATION**
AMPERES AT 0°C		AMPERES AT 20°C		AMPERES AT 60°C		SECONDS AT 20°C, 10A MAX	OHMS AT 20°C		WATTS AT 20°C, 16V
HOLD	TRIP	HOLD	TRIP	HOLD	TRIP		MIN	MAX*	MAX
2.20	4.40	1.90	3.80	1.10	2.20	2.0	0.024	0.080	1.5

* Maximum resistance is measured 1 hour after reflow.

** Values specified were determined using PCB's with 0.100"X1.5 ounce copper traces.

Agency Recognition: UL, CSA, TÜV
 Reference Documents: PS300
 Precedence: This specification takes precedence over documents referenced herein.
 Effectivity: Reference documents shall be the issue in effect on the date of invitation for bid.
 CAUTION: Operation beyond the rated voltage or current may result in rupture, electrical arcing or flame.

Materials Information

ROHS Compliant

Directive 2002/95/EC
Compliant

ELV Compliant

Directive 2000/53/EC
Compliant

Pb-Free

